

# For wildlife, water quality, and public access: FMR's Land Conservation Program



Alex Roth, Conservation Director  
Greater MN Parks and Trails LAD  
March 4, 2026



**FRIENDS <sup>OF</sup>  
THE  
MISSISSIPPI  
RIVER**



**Friends of the Mississippi River engages people to protect, restore and enhance the Mississippi River and its watershed in the Twin Cities region.**

# Our four interrelated program areas

## Land Conservation



## Land Use & Planning



## Water



## Stewardship & Education

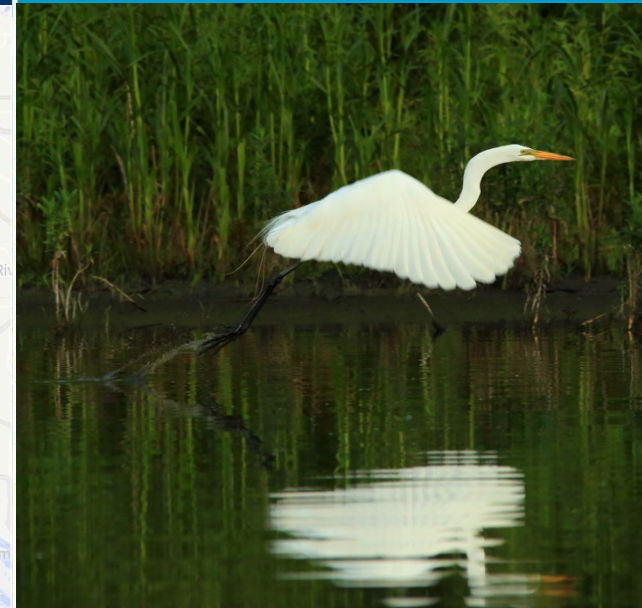
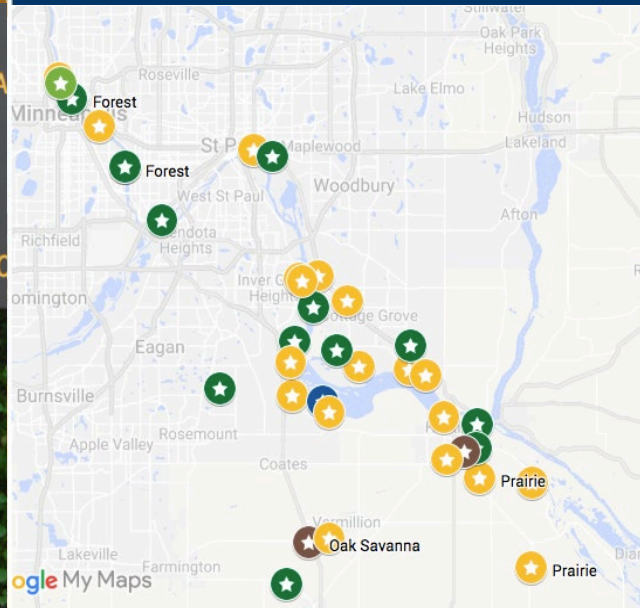


# Land Conservation

Work with landowners

Plan for and protect important natural areas

Restore habitat and ecological health

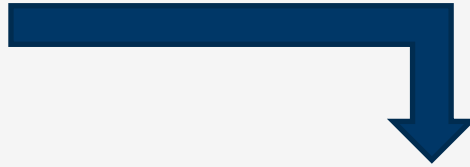




# Land Protection

Work with multiple stakeholders to facilitate permanent land protection projects

1. Identification and prioritization
2. Landowner Outreach
3. Protection options
4. Funding (partners)
5. Take-out partner



Highest quality natural areas, rare species locations

Other important natural areas

Wetlands, streams, lakes and buffers

Corridors of connectivity

# Protection Options, Funding Sources, and Take out Partners -

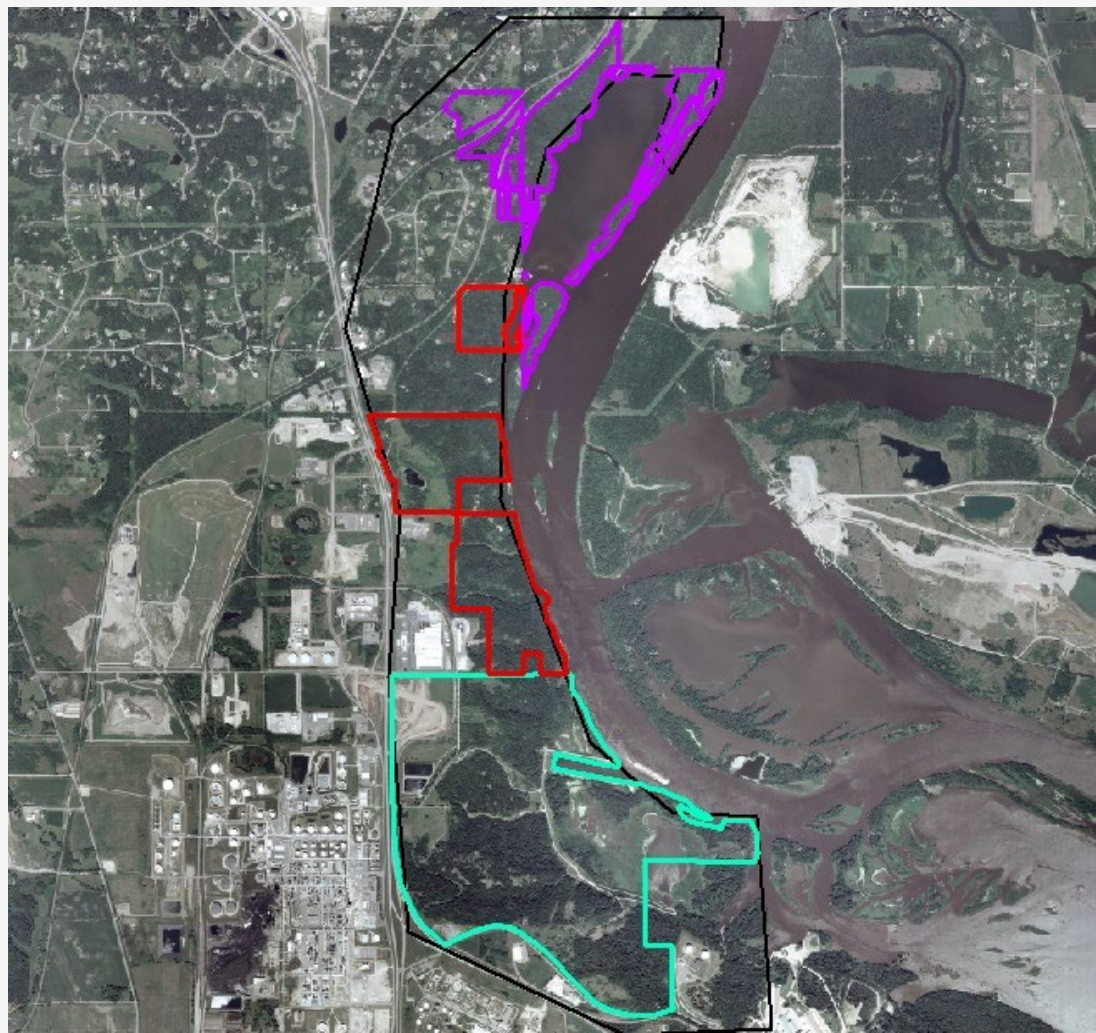
- Access Easements
- Conservation Easements
- Fee title Sale
  
- State funding sources:
  - LCCMR, OHF, CPL
  - Federal, county, local, FMR funding
  
- City or County ownership
  - MN DNR (SNA, WMA, AMA)
  - MLT and County easement programs

# Landowner outreach:

## Building long -term relationships

FMR seeks to build long-term relationships with landowners and serve as a close partner in their efforts to be good stewards of their land.





# Questions?

Alex Roth

FMR Conservation Director

- [aroth@fmr.org](mailto:aroth@fmr.org)
- 651-477-0928

[fmr.org](http://fmr.org)

Instagram ([@friendsmissriv](https://www.instagram.com/friendsmissriv))

